

**CD1 Monoclonal Antibody(9H6)**  
Catalog # AP63322**Specification**

---

**CD1 Monoclonal Antibody(9H6) - Product Information**

Application	IHC-P, IF
Primary Accession	<a href="#">P06126</a>
Reactivity	Human, Mouse, Rat
Host	Mouse
Clonality	Monoclonal

**CD1 Monoclonal Antibody(9H6) - Additional Information****Gene ID** 909**Other Names**

T-cell surface glycoprotein CD1a (T-cell surface antigen T6/Leu-6) (hTa1 thymocyte antigen) (CD antigen CD1a)

**Dilution**IHC-P~~N/A  
IF~~1:50~200**Format**

PBS, pH 7.4, containing 0.09% (W/V) sodium azide as Preservative and 50% Glycerol.

**Storage Conditions**

-20°C

**CD1 Monoclonal Antibody(9H6) - Protein Information****Name** CD1A**Function**

Antigen-presenting protein that binds self and non-self lipid and glycolipid antigens and presents them to T-cell receptors on natural killer T-cells.

**Cellular Location**

Cell membrane; Single-pass type I membrane protein. Membrane raft; Single-pass type I membrane protein. Endosome membrane; Single- pass type I membrane protein. Note=Subject to intracellular trafficking between the cell membrane and endosomes (PubMed:11231314). Localizes to cell surface lipid rafts (PubMed:18178838).

**Tissue Location**

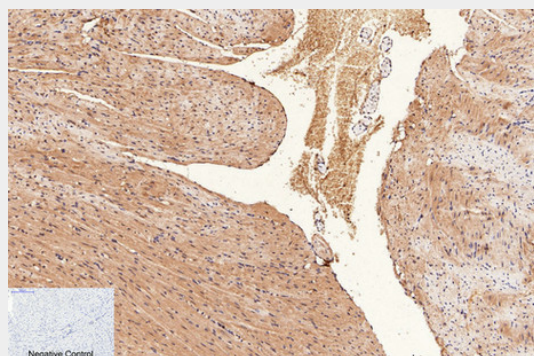
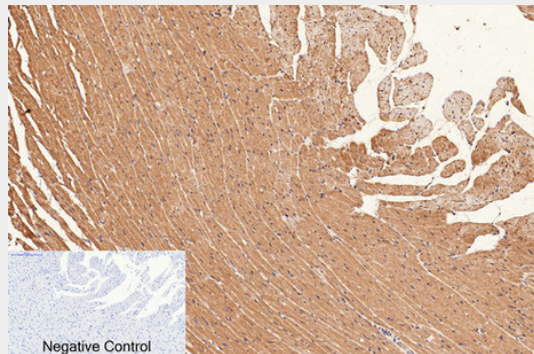
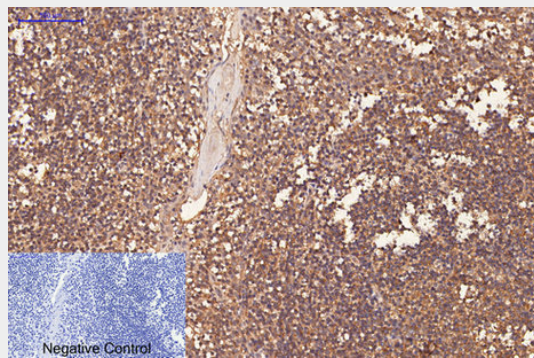
Expressed on cortical thymocytes, epidermal Langerhans cells, dendritic cells, on certain T-cell leukemias, and in various other tissues.

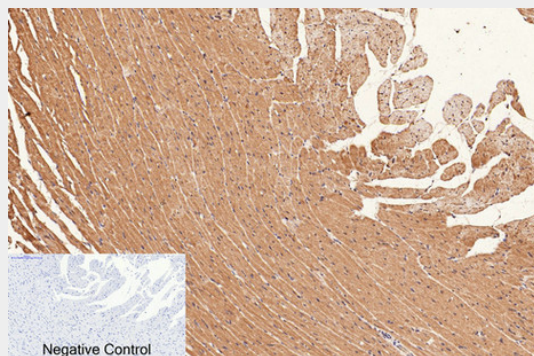
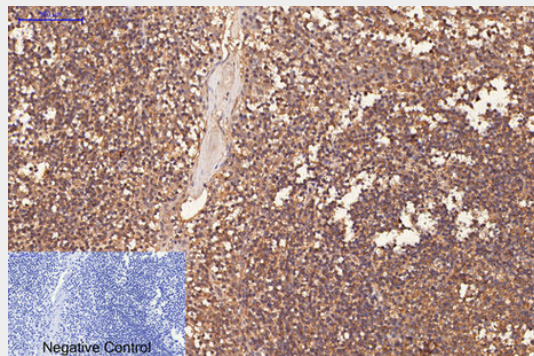
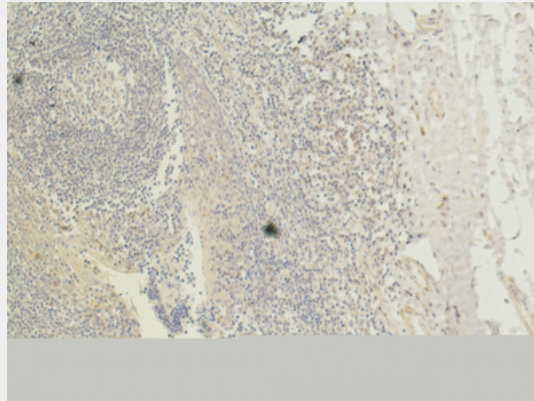
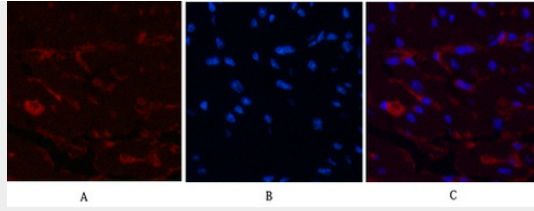
## CD1 Monoclonal Antibody(9H6) - Protocols

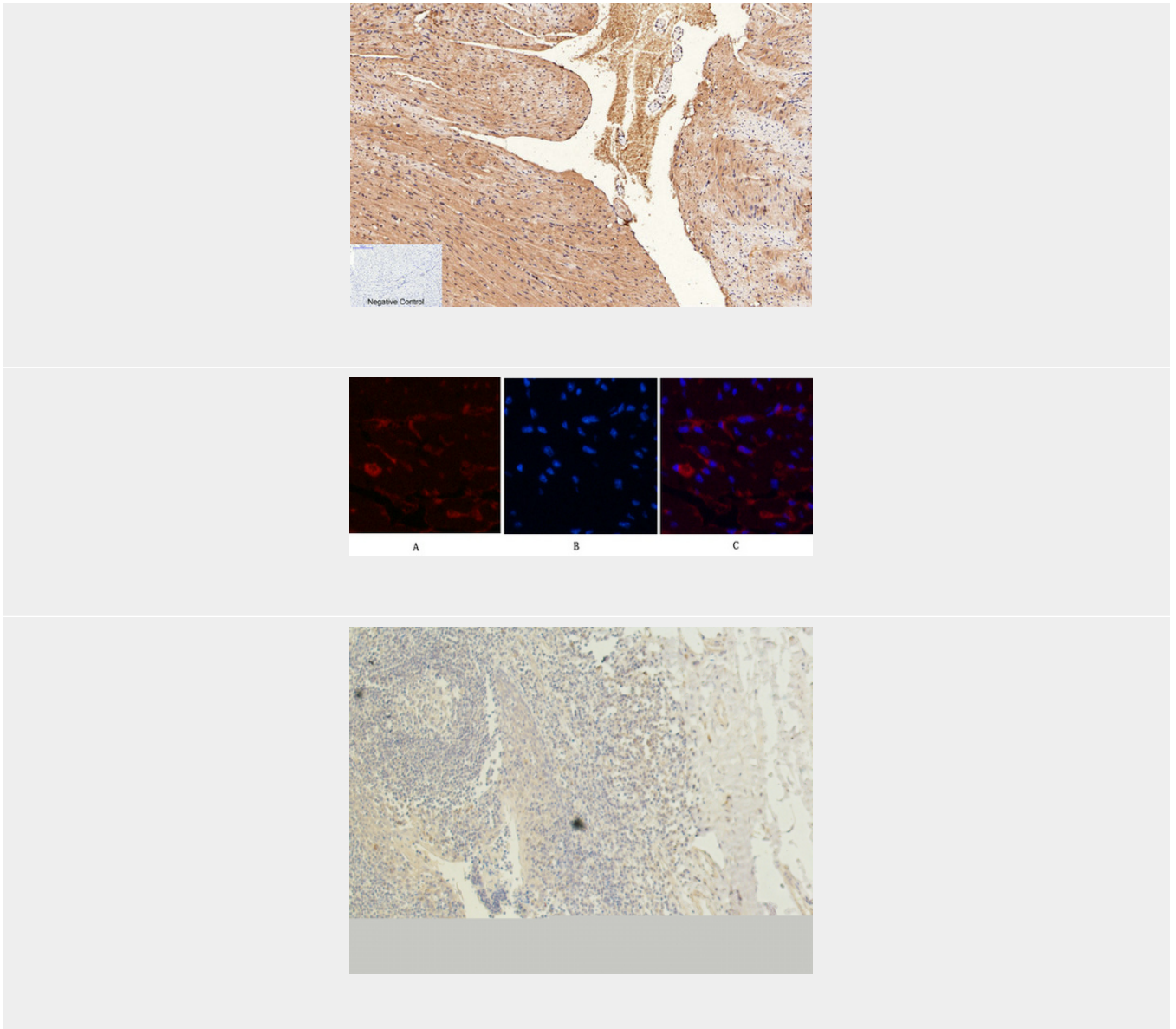
Provided below are standard protocols that you may find useful for product applications.

- [Western Blot](#)
- [Blocking Peptides](#)
- [Dot Blot](#)
- [Immunohistochemistry](#)
- [Immunofluorescence](#)
- [Immunoprecipitation](#)
- [Flow Cytometry](#)
- [Cell Culture](#)

## CD1 Monoclonal Antibody(9H6) - Images







### **CD1 Monoclonal Antibody(9H6) - Background**

Antigen-presenting protein that binds self and non-self lipid and glycolipid antigens and presents them to T-cell receptors on natural killer T-cells.